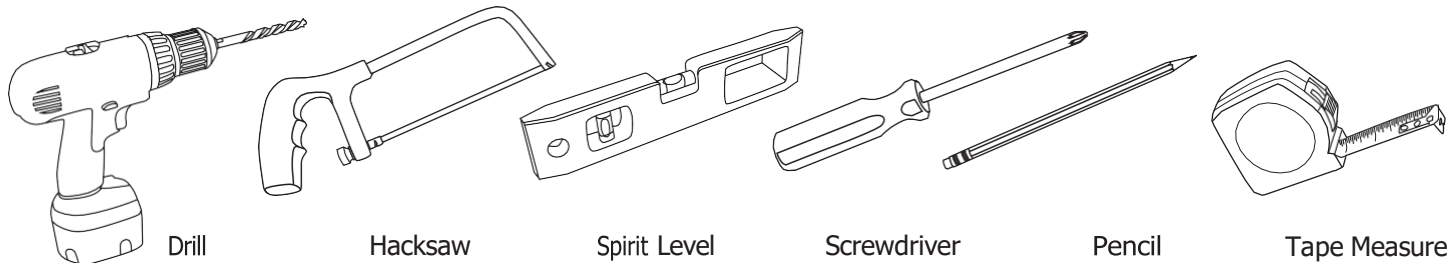


Metal Curtain Pole

Fitting Instructions

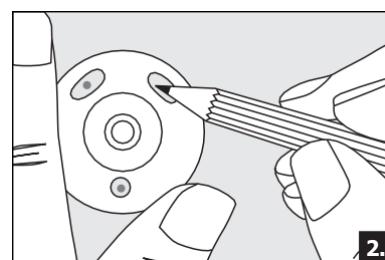
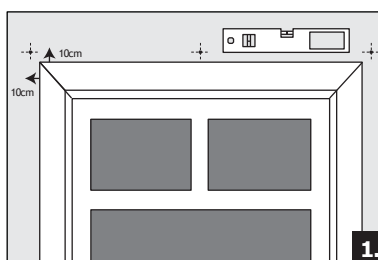


Tools you will need...

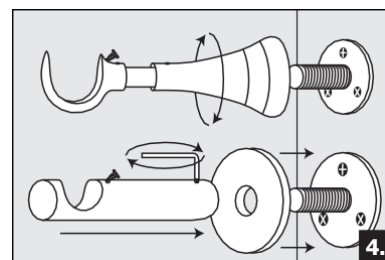
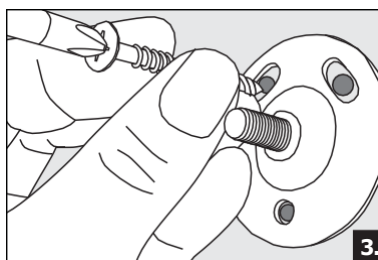


how to... fit your curtain pole...

Step 1: As a guideline we recommend that the brackets are positioned 10cm up and 10cm out from both sides of the window frame (you may use a spirit level for accuracy). Add a centre bracket if fitting a pole length of 240cm or above.

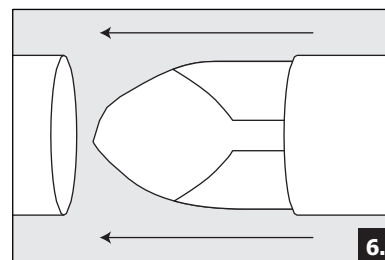
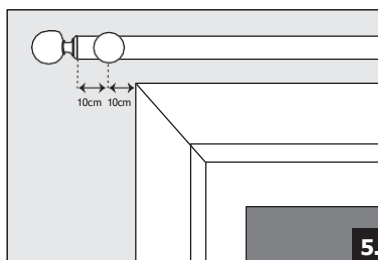


Step 2: If you are using a cup bracket unscrew the back plate from the bracket (by turning anti clockwise), if you are using a cylinder bracket remove the back plate and cover from the wall end of the bracket by loosening the grub screw with a hex key (supplied). Position the back plate on the wall where the bracket will be fitted. Use a pencil to mark the exact position of the screw holes that will fix the brackets to the wall.



Step 3: Drill into the wall at the marked positions using an appropriate drill bit for the type of wall. Insert wall plugs, ensuring they are flush with the wall. Then screw the back plate into place using the three screws provided.

Step 4: If you have chosen the cup bracket screw the bracket onto the back plate on the wall, turning clockwise. If you have chosen the cylinder bracket replace the back plate cover and the bracket stem and tighten the grub screw, ensuring the cup is facing upwards.

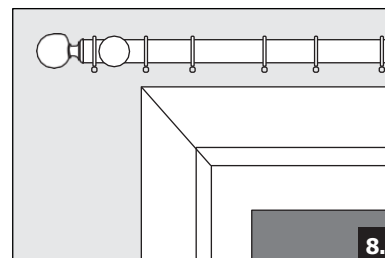
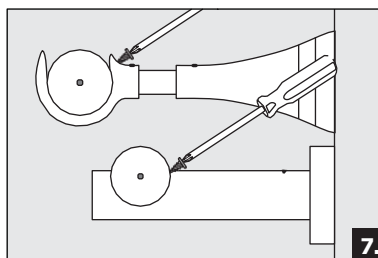


Step 5: Check that the pole fits the window. If needed, cut the curtain pole to size using a hacksaw (if using 2 poles, ensure each pole is of equal length). We recommend that the pole length is long enough so that it is approx. 20cm beyond each side of the window frame. (This allows on each side 10cm to the bracket fixing, then another 10cm to the end of the pole).

Step 6: If joining two poles together, use the pole joiner supplied to connect them.

Step 7: Fit the required number of rings onto the curtain pole, before positioning the pole on the brackets. Finish off by securing the brackets with the small screws provided.

Step 8: Place the last ring on the outer side of the end bracket on both sides, before attaching the finial.



Avoid excessive moisture which may cause rust spots to develop.



Just Furnishings Limited

customerservice@justfurnishings.co.uk | Highlands Road, Solihull, West Midlands, B90 4NP

www.justfurnishings.co.uk

Company Reg: 05998499